

QSD3500S QSD3800S

Entry Level-2 Post Lift 入门系列 - 双边手动解锁双柱举升机

QSD3500S



Dual Manual Lock Release
双边手动解锁

QSD3800S



Dual Manual Lock Release
双边手动解锁



Split-column for easy exporting
分体式立柱便于出口
(选配)

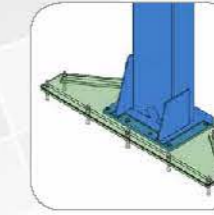
OPTIONAL ACCESSORIES 可选配件



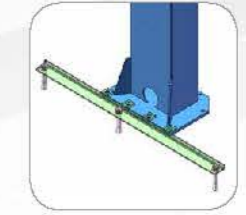
Height adapters for SUVs & trucks (50/70/100mm)
适用于各种车型的增高套



Dust protection
防尘遮布



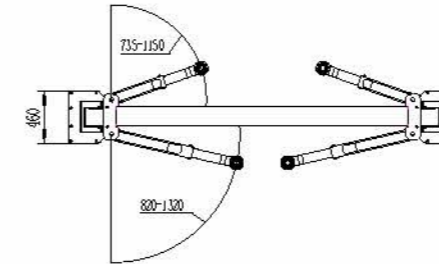
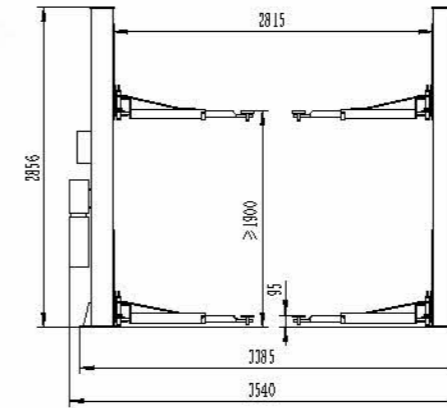
Floor reinforcement
加强底座降低打孔深度



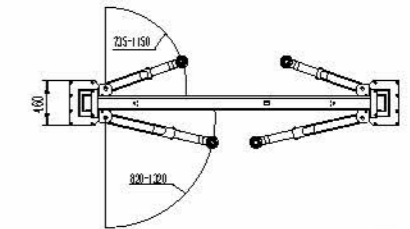
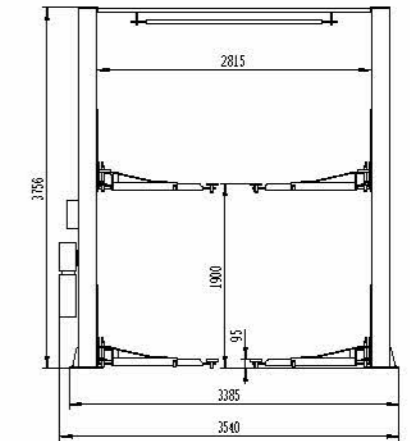
Ground support frames
底板固定横担

OVERALL DIMENSION 尺寸参数

QSD3500S



QSD3800S



FEATURES 产品特点



Automatic arm-locking system
托臂锁自动上锁设计



Chain protector
链条防脱装置



Synchronization cable
钢丝绳同步



Car door protection
车门防撞垫



Safety valves against hose breaking
安全阀确保使用安全

STANDARD 标准配置

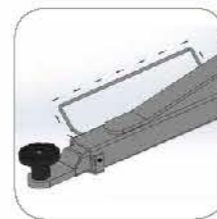


Adjustable lifting pad
可调节举升托盘



Steel motor
钢板电机

OPTIONAL FEATURES 此产品可选升级方案



Foot protection design
防压脚设计



3-stage front arms (690mm-1290mm)
3 段式前托臂 (690mm-1290mm)

TECHNICAL DATA 技术参数

Model	型号	QSD3500S	QSD3800S
Capacity	举升重量	4000kg	4000kg
Lifting height	举升高度	1900mm	1900mm
Min. Height	最低高度	95mm	95mm
Overall height	总高度	2856mm	3756mm
Overall width	总宽度	3385mm	3385mm
Front arm(2-stage)	前托臂 (2 段式)	735-1150mm	735-1150mm
Rear arm(2-stage)	后托臂 (2 段式)	820-1320mm	820-1320mm
Lifting time	上升时间	45-50s	45-50s
Power of motor	电机功率	2.2kW	2.2kW