

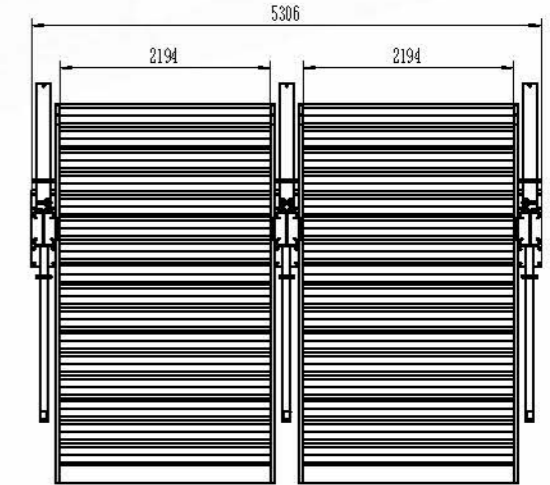
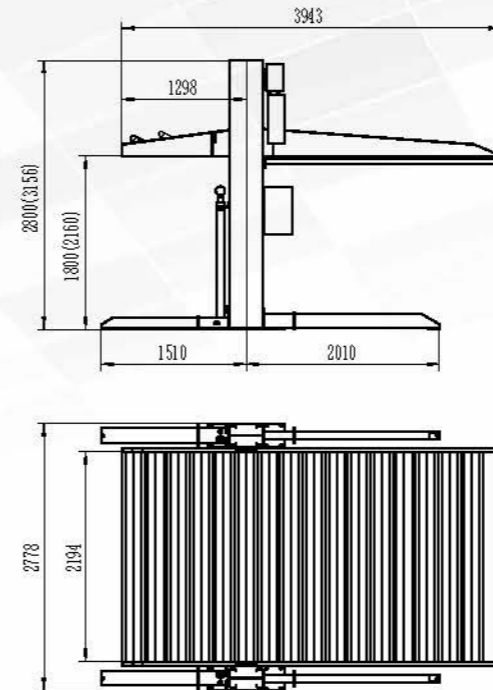
QYK-ET30



2-Post Parking Lift 双柱停车举升机

OVERALL DIMENSION 尺寸参数

- Electric Lock Release
电动解锁
- Electromagnetic Lowering
电磁下降



FEATURES 产品特点



Chain protector design
链条防脱防夹手功能



Height limit switch
上限位开关



Safety valves against hose breaking
安全阀确保使用安全



Parking space doubler
上下双层停车设计

STANDARD 标准配置



24v safety control
24v 安全电压操作



Aluminum motor
铝电机散热性能好

TECHNICAL DATA 技术参数

Model	型号	QYK-ET30
Capacity	举升重量	3000kg
Lifting height	举升高度	1800mm/2160mm
Platform length	平台长度	3943mm
Overall height	总高度	2800mm/3156mm
Lifting time	上升时间	45-50s
Power of motor	电机功率	2.2kW